

# Salesian College, Sonada

*UGC Certified College with potential for Excellence (CPE)*

*Accredited by NAAC with Grade 'A' (3<sup>rd</sup> cycle)*

*Affiliated to University of North Bengal*

Sonada – 734 209

**Dated 20/11/2022**

## Office of the Examination

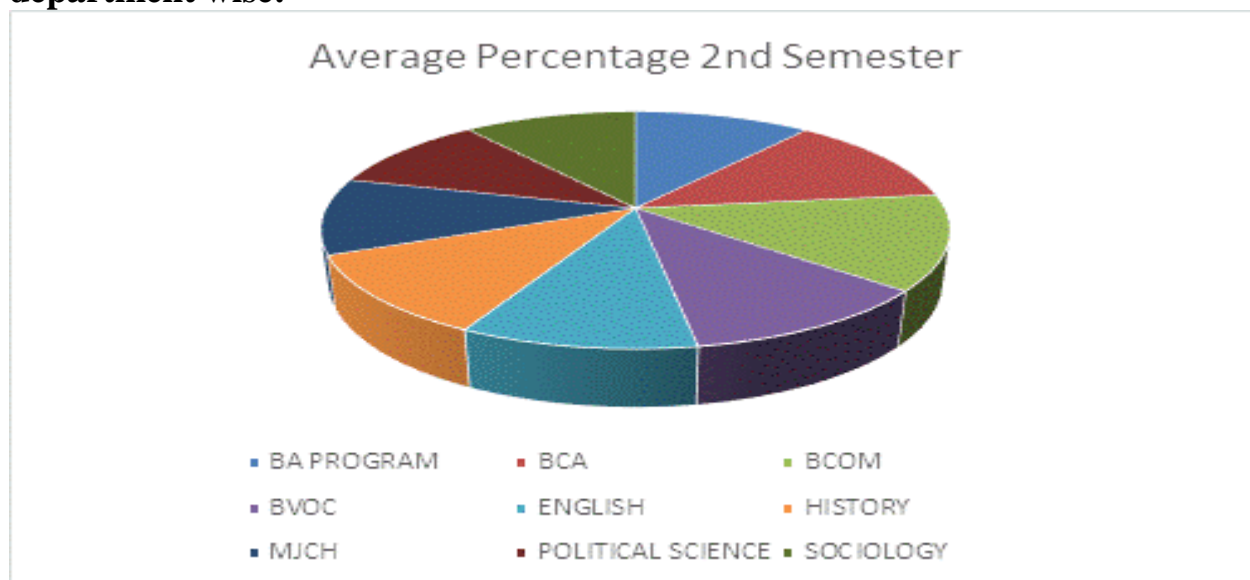
**2<sup>nd</sup>, 4<sup>th</sup> & 6<sup>th</sup>** BA, B.Com, BBA, BCA and B.Voc  
(Honours and Program) University Examination Report

The University Even Semester Examination of the 2<sup>nd</sup>, 4<sup>th</sup> & 6<sup>th</sup> semester BA, B.Com, BBA, BCA and B.Voc (Honours and Program) students commenced on, 22<sup>nd</sup> June, 2022 and was concluded on, 8<sup>th</sup> July, 2022. The average Percentage summary of the internal examination obtained by the students in their different courses is shown below.

**Table showing the average Percentage Obtained by the respective department 2<sup>nd</sup> Semester students.**

Sl.No	Department	Semester	Average Percentage
1	BA PROGRAM	2nd	68.00
2	BCA	2nd	76.98
3	BCOM	2nd	81.21
4	BVOC	2nd	70.90
5	ENGLISH	2nd	64.39
6	HISTORY	2nd	69.71
7	MJCH	2nd	65.16
8	POLITICAL SCIENCE	2nd	64.21
9	SOCIOLOGY	2nd	66.80

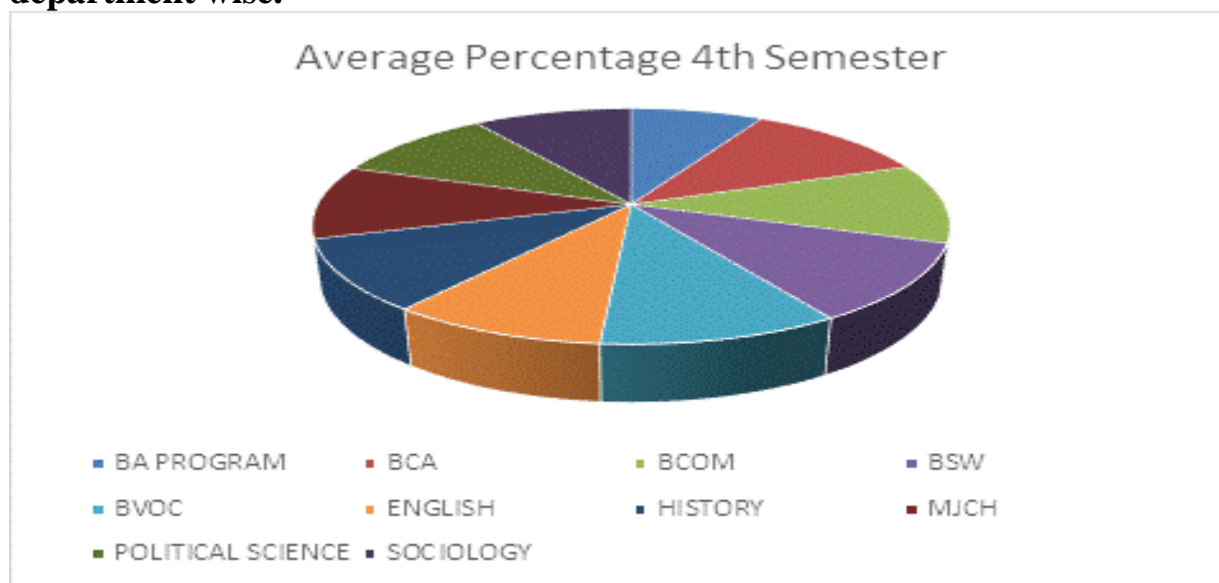
**Pie chart showing average Percentage Obtained by the 2<sup>nd</sup> semester students department wise:**



**Table showing the average Percentage Obtained by the respective department 4<sup>th</sup> Semester students.**

Sl.No	Department	Semester	Average Percentage
1	BA PROGRAM	4th	56.48
2	BCA	4th	79.56
3	BCOM	4th	77.17
4	BSW	4th	75.93
5	BVOC	4th	72.70
6	ENGLISH	4th	65.50
7	HISTORY	4th	68.93
8	MJCH	4th	71.16
9	POLITICAL SCIENCE	4th	70.00
10	SOCIOLOGY	4th	67.94

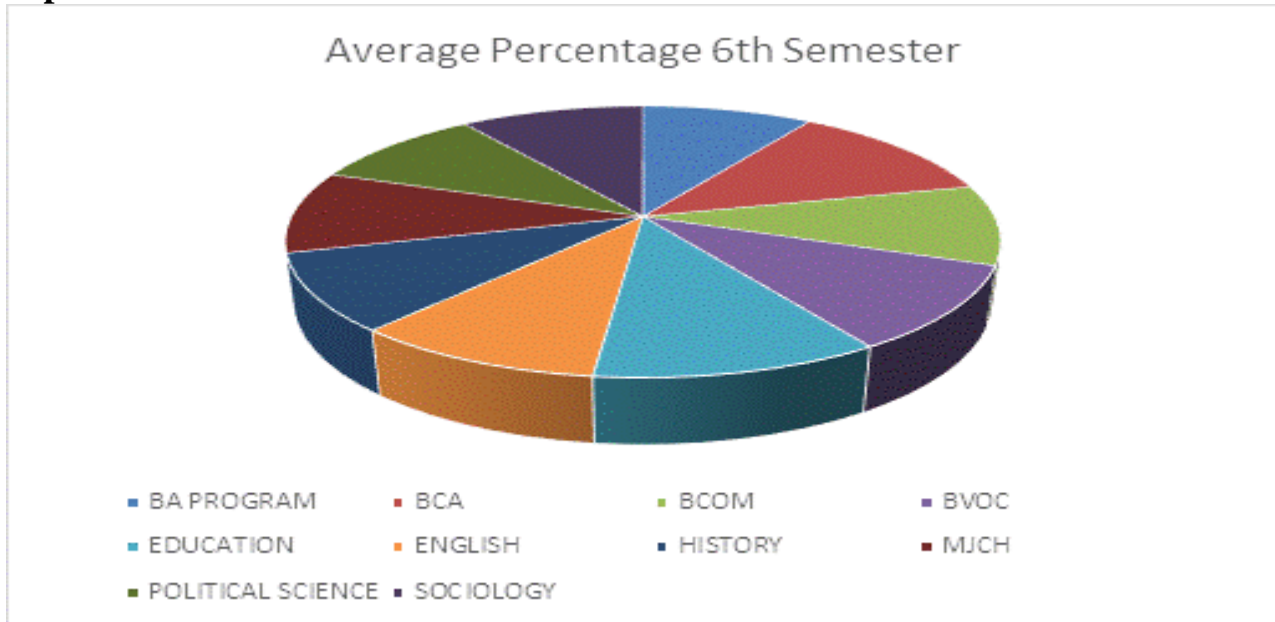
**Pie chart showing average Percentage Obtained by the 4<sup>th</sup> semester students department wise.**



**Table showing the average Percentage Obtained by the respective department 6<sup>th</sup> Semester students.**

Sl.No	Department	Semester	Average Percentage
1	BA PROGRAM	6th	65.52
2	BCA	6th	85.54
3	BCOM	6th	67.74
4	BVOC	6th	72.19
5	EDUCATION	6th	78.56
6	ENGLISH	6th	68.81
7	HISTORY	6th	65.67
8	MJCH	6th	69.73
9	POLITICAL SCIENCE	6th	68.15
10	SOCIOLOGY	6th	70.67

**Pie chart showing average Percentage Obtained by the 6<sup>th</sup> semester students department wise.**



**The department and semester wise summary report (showing the percentage Slab and the number of students) is given below:**

	Summary					
BA PROGRAM	<i>BA PROGRAM 6th Semester</i>		<i>BA PROGRAM 2nd Semester</i>		<i>BA PROGRAM 4th Semester</i>	
	Percentage Slab	No of Students	Percentage Slab	No of Students	Percentage Slab	No of Students
	0-60%	0	0-60%	0	0-60%	6
	60% -70%	7	60% -70%	2	60% -70%	1
	70%-80%	0	70%-80%	0	70%-80%	0
	80%-90%	0	80%-90%	0	80%-90%	0
	Above 90%	0	Above 90%	0	Above 90%	0
	<b>Total</b>	<b>7</b>	<b>Total</b>	<b>2</b>	<b>Total</b>	<b>7</b>

<b>BCA</b>	<b>BCA 6th Semester</b>		<b>BCA 2nd Semester</b>		<b>BCA 4th Semester</b>	
	Percentage Slab	No of Students	Percentage Slab	No of Students	Percentage Slab	No of Students
	0-60%	0	0-60%	0	0-60%	0
	60% -70%	0	60% -70%	10	60% -70%	0
	70%-80%	2	70%-80%	2	70%-80%	3
	80%-90%	4	80%-90%	1	80%-90%	2
	Above 90%	0	Above 90%	1	Above 90%	0
	<b>Total</b>	<b>6</b>	<b>Total</b>	<b>14</b>	<b>Total</b>	<b>5</b>
<b>B.COM</b>	<b>B.COM 6th Semester</b>		<b>B.COM 2nd Semester</b>		<b>B.COM 4th Semester</b>	
	Percentage Slab	No of Students	Percentage Slab	No of Students	Percentage Slab	No of Students
	0-60%	0	0-60%	6	0-60%	0
	60% -70%	7	60% -70%	0	60% -70%	0
	70%-80%	2	70%-80%	0	70%-80%	5
	80%-90%	0	80%-90%	0	80%-90%	2
	Above 90%	0	Above 90%	0	Above 90%	0
	<b>Total</b>	<b>9</b>	<b>Total</b>	<b>6</b>	<b>Total</b>	<b>7</b>
<b>BSW</b>	<b>BSW 6th Semester</b>		<b>BSW 2nd Semester</b>		<b>BSW 4th Semester</b>	
	Percentage Slab	No of Students	Percentage Slab	No of Students	Percentage Slab	No of Students
	0-60%	N/A	0-60%	N/A	0-60%	0
	60% -70%	N/A	60% -70%	N/A	60% -70%	1
	70%-80%	N/A	70%-80%	N/A	70%-80%	7
	80%-90%	N/A	80%-90%	N/A	80%-90%	1
	Above 90%	N/A	Above 90%	N/A	Above 90%	0
	<b>Total</b>	<b>N/A</b>	<b>Total</b>	<b>N/A</b>	<b>Total</b>	<b>9</b>
<b>B.VOC</b>	<b>B.VOC 6th Semester</b>		<b>B.VOC 2nd Semester</b>		<b>B.VOC 4th Semester</b>	
	Percentage Slab	No of Students	Percentage Slab	No of Students	Percentage Slab	No of Students
	0-60%	0	0-60%	0	0-60%	0
	60% -70%	2	60% -70%	5	60% -70%	3
	70%-80%	11	70%-80%	10	70%-80%	9

	80%-90%	0	80%-90%	0	80%-90%	0
	Above 90%	0	Above 90%	0	Above 90%	0
	<b>Total</b>	<b>13</b>	<b>Total</b>	<b>15</b>	<b>Total</b>	<b>12</b>
<b>EDUCATION</b>	<b><i>B.VOC 6th Semester</i></b>		<b><i>B.VOC 2nd Semester</i></b>		<b><i>B.VOC 4th Semester</i></b>	
	Percentage Slab	No of Students	Percentage Slab	No of Students	Percentage Slab	No of Students
	0-60%	0	0-60%	NA	0-60%	NA
	60% -70%	0	60% -70%	NA	60% -70%	NA
	70%-80%	1	70%-80%	NA	70%-80%	NA
	80%-90%	1	80%-90%	NA	80%-90%	NA
	Above 90%	0	Above 90%	NA	Above 90%	NA
	<b>Total</b>	<b>2</b>	<b>Total</b>	<b>0</b>	<b>Total</b>	<b>0</b>
<b>ENGLISH</b>	<b><i>ENGLISH 6th Semester</i></b>		<b><i>ENGLISH 2nd Semester</i></b>		<b><i>ENGLISH 4th Semester</i></b>	
	Percentage Slab	No of Students	Percentage Slab	No of Students	Percentage Slab	No of Students
	0-60%	30	0-60%	7	0-60%	2
	60% -70%	13	60% -70%	13	60% -70%	24
	70%-80%	17	70%-80%	9	70%-80%	10
	80%-90%	0	80%-90%	0	80%-90%	0
	Above 90%	0	Above 90%	0	Above 90%	0
	<b>Total</b>	<b>60</b>	<b>Total</b>	<b>29</b>	<b>Total</b>	<b>36</b>
<b>HISTORY</b>	<b><i>HISTORY 6th Semester</i></b>		<b><i>HISTORY 2nd Semester</i></b>		<b><i>HISTORY 4th Semester</i></b>	
	Percentage Slab	No of Students	Percentage Slab	No of Students	Percentage Slab	No of Students
	0-60%	4	0-60%	1	0-60%	0
	60% -70%	4	60% -70%	2	60% -70%	7
	70%-80%	0	70%-80%	4	70%-80%	4
	80%-90%	0	80%-90%	0	80%-90%	0
	Above 90%	0	Above 90%	0	Above 90%	0
	<b>Total</b>	<b>8</b>	<b>Total</b>	<b>7</b>	<b>Total</b>	<b>11</b>

<b>MASS COM &amp; JOURNALISM</b>	<b>MASS COM &amp; JOURNALISM 6th Semester</b>		<b>MASS COM &amp; JOURNALISM 2nd Semester</b>		<b>MASS COM &amp; JOURNALISM 4th Semester</b>	
	Percentage Slab	No of Students	Percentage Slab	No of Students	Percentage Slab	No of Students
	0-60%	0	0-60%	0	0-60%	0
	60% -70%	5	60% -70%	5	60% -70%	4
	70%-80%	3	70%-80%	0	70%-80%	9
	80%-90%	0	80%-90%	0	80%-90%	0
	Above 90%	0	Above 90%	0	Above 90%	0
	<b>Total</b>	<b>8</b>	<b>Total</b>	<b>5</b>	<b>Total</b>	<b>13</b>
<b>POLITICAL SCIENCE</b>	<b>POLITICAL SCIENCE 6th Semester</b>		<b>POLITICAL SCIENCE 2nd Semester</b>		<b>POLITICAL SCIENCE 4th Semester</b>	
	Percentage Slab	No of Students	Percentage Slab	No of Students	Percentage Slab	No of Students
	0-60%	1	0-60%	7	0-60%	1
	60% -70%	19	60% -70%	9	60% -70%	10
	70%-80%	8	70%-80%	5	70%-80%	0
	80%-90%	0	80%-90%	0	80%-90%	0
	Above 90%	0	Above 90%	0	Above 90%	0
	<b>Total</b>	<b>28</b>	<b>Total</b>	<b>21</b>	<b>Total</b>	<b>11</b>
<b>SOCIOLOGY</b>	<b>SOCIOLOGY 6th Semester</b>		<b>SOCIOLOGY 2nd Semester</b>		<b>SOCIOLOGY 4th Semester</b>	
	Percentage Slab	No of Students	Percentage Slab	No of Students	Percentage Slab	No of Students
	0-60%	0	0-60%	1	0-60%	1
	60% -70%	7	60% -70%	11	60% -70%	14
	70%-80%	0	70%-80%	4	70%-80%	8
	80%-90%	0	80%-90%	0	80%-90%	0
	Above 90%	0	Above 90%	0	Above 90%	0
	<b>Total</b>	<b>0</b>	<b>Total</b>	<b>16</b>	<b>Total</b>	<b>23</b>

**The following table shows the detailed report of all the students of 2<sup>nd</sup> semester:**

<b>SL. No.</b>	<b>Name of the students</b>	<b>Course/ Department</b>	<b>Total Marks</b>	<b>Total Marks Obtained</b>	<b>%</b>
1	KRIKA SINGH	BA PROGRAM	300	182	66.18
2	SOHAN TAMANG	BA PROGRAM	300	192	69.82
3	DINCHEN TAMANG	BCA	300	199	72.36
4	DIPESH LIMBU	BCA	300	227	82.55
5	KUNSANG LAMA	BCA	300	210	76.36
6	MUSKAN CHETTRI	BCA	300	208	75.64
7	NIKETAN NIROWLA	BCA	300	210	76.36
8	POOJAN LAMA	BCA	300	204	74.18
9	PREETY K. SAHA	BCA	300	203	73.82
10	SAHIL GURUNG	BCA	300	213	77.45
11	STANY S. MURMU	BCA	300	195	90.91
12	YOUJAN SUBBA	BCA	300	193	70.18
13	ALISHA SORENG	B.COM	300	210	76.36
14	NANSY TAMANG	B.COM	300	225	81.82
15	SUBHANKAR S. DAS	B.COM	300	205	74.55
16	SUJOY MURMU	B.COM	300	230	83.64
17	TSSHERING P. DUKPA	B.COM	300	234	85.09
18	VANSIKA AGARWAL	B.COM	300	236	85.82
19	AKASH TAMANG	B.VOC	300	192	64.00
20	AWANTIKA THAPA	B.VOC	300	229	76.33
21	BAISHNAVI GIRI	B.VOC	300	197	65.67
22	BISWAS NEWAR	B.VOC	300	211	70.33
23	CHOKEY SHERPA	B.VOC	300	236	78.67
24	MINJU TAMANG	B.VOC	300	225	75.00
25	NAMITA TAMANG	B.VOC	300	224	74.67
26	NEHA BALMIKI	B.VOC	300	237	79.00
27	NITYAM TAMANG	B.VOC	300	218	72.67



28	PRIYASISH RAI	B.VOC	300	198	66.00
29	SANSHKAR PRADHAN	B.VOC	300	187	62.33
30	SATYAM LAMA	B.VOC	300	224	74.67
31	SIDDHANTH PRADHAN	B.VOC	300	210	70.00
32	SUBEKCHA RAI	B.VOC	300	214	71.33
33	PRADHUM CHETTRI	B.VOC	300	214	71.33
34	CHHILAMU TAMANG	B.VOC	300	187	62.33
35	ADITYA SUBBA	ENGLISH	300	202	73.45
36	AKRITI RAI	ENGLISH	300	211	76.73
37	ANMOL B. RAI	ENGLISH	300	187	68
38	ANSHU CHETTRI	ENGLISH	300	213	77.45
39	DAMANBHA KHYRIEM	ENGLISH	300	127	46.18
40	DEEPAK KANDULNA	ENGLISH	300	202	73.45
41	DIKSHA TAMANG	ENGLISH	300	177	64.36
42	DIPSIKHA RAI	ENGLISH	300	177	64.36
43	JOSEPH DHANWAR	ENGLISH	300	182	66.18
44	KHEMRAJ SHARMA	ENGLISH	300	172	62.55
45	KRITIKA PRASAD	ENGLISH	300	170	61.82
46	KULDEEP MINZ	ENGLISH	300	198	72
47	LOPSANG LAMA	ENGLISH	300	176	64
48	MUKESH BARWA	ENGLISH	300	183	66.55
49	NAWANG DORJEE TAMANG	ENGLISH	300	170	61.82
50	NAWANG SHERPA	ENGLISH	300	148	53.82
51	NISCHAL RAI	ENGLISH	300	158	57.45
52	PARTHA JYOTI ROY	ENGLISH	300	195	70.91
53	PRANAV DEEP RAI	ENGLISH	300	161	58.55
54	PRATHNA CHETTRI	ENGLISH	300	158	57.45
55	PRATYUSH THAMI	ENGLISH	300	104	37.82
56	SANJEEB KUMAR TIGGA	ENGLISH	300	166	60.36
57	SHANBORLANG LYNGDOH	ENGLISH	300	198	72

58	SHELLEY RAI	ENGLISH	300	201	73.09
59	SHIMPI SINGH	ENGLISH	300	173	62.91
60	SHRISHTII SHAH	ENGLISH	300	195	70.91
61	SOURAV RAI	ENGLISH	300	184	66.91
62	SUMIRAN THAPA	ENGLISH	300	162	58.91
63	RIYAJ TAMANG	ENGLISH	300	186	67.27
64	ASHISH TETE	HISTORY	300	209	76
65	ASIS TAMANG	HISTORY	300	158	57.45
66	ASIT DUNGDUNG	HISTORY	300	201	73.09
67	NAZIYA HUSSAIN	HISTORY	300	184	66.91
68	PEMA TAMANG	HISTORY	300	186	67.64
69	PRIYADARSHAN CHETTRI	HISTORY	300	199	72.36
70	SANJU JANI MONDAL	HISTORY	300	205	74.55
71	ANA FATMA NASIM	MASS COM	300	167	60.73
72	ANJAL CHHETRI	MASS COM	300	180	65.45
73	DRISHYA RAI	MASS COM	300	175	63.64
74	PRABHAKAR KHAWAS	MASS COM	300	182	66.18
75	RANI CHAKRABORTY	MASS COM	300	192	69.82
76	ADITYA PRADHAN	POL. SCIENCE	300	144	52.36
77	ANISH SUBBA	POL. SCIENCE	300	180	65.45
78	ANKU TAMANG	POL. SCIENCE	300	198	72
79	CHOGYAL LAMA	POL. SCIENCE	300	161	58.55
80	DHIRAJ CHANDRA TAMANG	POL. SCIENCE	300	158	57.45
81	HEMANI RAI	POL. SCIENCE	300	208	75.64
82	KRIKA RAI	POL. SCIENCE	300	201	73.09
83	KUNSANG DOMA BHUTIA	POL. SCIENCE	300	215	78.18
84	MANISHA CHHETRI	POL. SCIENCE	300	172	62.55
85	NIKITA PRADHAN	POL. SCIENCE	300	181	65.82
86	PEMBA DORJAY LAMA	POL. SCIENCE	300	186	67.64

87	PEMBA HISSEY TAMANG	POL. SCIENCE	300	153	55.64
88	PHRANGDERSON SOHTUN	POL. SCIENCE	300	199	72.36
89	RIKDZIN SHERPA	POL. SCIENCE	300	164	59.64
90	SIDDHANT RAI	POL. SCIENCE	300	125	45.45
91	SIDDHART TAMANG	POL. SCIENCE	300	189	68.73
92	SUPRIYA TAMANG	POL. SCIENCE	300	187	68
93	VISHAL SONAR	POL. SCIENCE	300	167	60.73
94	YANKI LAMU LAMA	POL. SCIENCE	300	180	65.45
95	KRIKA THAMI	POL. SCIENCE	300	184	66.91
96	NIKHIL PRADHAN	POL. SCIENCE	300	156	56.73
97	ABINASH SUBBA	SOCIOLOGY	300	141	51.27
98	ANKIT CHETTRI	SOCIOLOGY	300	186	67.64
99	JOSTIN LANGI	SOCIOLOGY	300	196	71.27
100	KUNAL RAI	SOCIOLOGY	300	183	66.55
101	KUNJAN RAI	SOCIOLOGY	300	177	64.36
102	NANDITA RAHA	SOCIOLOGY	300	208	75.64
103	NIGAM TAMANG	SOCIOLOGY	300	181	65.82
104	NISCHAL RANA	SOCIOLOGY	300	183	66.55
105	RAHUL YADAV	SOCIOLOGY	300	179	65.09
106	RIKZEN DUKPA	SOCIOLOGY	300	193	70.18
107	SANGAY SHERPA	SOCIOLOGY	300	171	62.18
108	SMRITI THAPA	SOCIOLOGY	300	184	66.91
109	SUBEKSHA MUKHIA	SOCIOLOGY	300	202	73.45
110	TEIMON SOHKHLET	SOCIOLOGY	300	189	68.73
111	SUSHIL THAPA	SOCIOLOGY	300	177	64.36
112	ANJULI TAMANG	SOCIOLOGY	300	189	68.73

**The following table shows the detailed report of all the students of 4<sup>th</sup> semester:**

<b>SL. No.</b>	<b>Name of the students</b>	<b>Course/ Department</b>	<b>Total Marks</b>	<b>Total Marks Obtained</b>	<b>%</b>
1	ABHIGYAN RAI	BA PROGRAM	300	161	53.67
2	ABIRAL RAI	BA PROGRAM	300	151	50.33
3	AMAN DEWAN	BA PROGRAM	300	175	58.33
4	DAWA T. TAMANG	BA PROGRAM	300	177	59.00
5	NIMA D. RUMBA	BA PROGRAM	300	165	55.00
6	PHURBA TAMANG	BA PROGRAM	300	190	63.33
7	AROGYA SHARMA	BA PROGRAM	300	167	55.67
8	ABHIJIT TAMANG	BCA	375	315	84.00
9	ANURAG THAPA	BCA	375	294	78.40
10	NIKITA GUPTA	BCA	375	318	84.80
11	RAHIL LAMA	BCA	375	296	78.93
12	RANANTESH MONDAL	BCA	375	267	71.20
13	SAMAR SOREN	BCA	375	300	80.00
14	ANUP RAI	B.COM	375	276	73.60
15	BEESHESH THAPA	B.COM	375	279	74.40
16	JENI LIMBU	B.COM	375	282	75.20
17	RESHAD RAI	B.COM	375	292	77.87
18	ROHAN RAI	B.COM	375	305	81.33
19	RONEEKA SHARMA	B.COM	375	305	81.33
20	SAMDEN TAMANG	B.COM	375	276	73.60

21	SUMPURNA CHETTRI	B.COM	375	300	80.00
22	ATHENA SHARMA	BSW	475	362	76.21
23	DIPSHIKA CHETTRI	BSW	475	376	79.16
24	DORJAY TSHERING LEPCHA	BSW	475	350	73.68
25	NIKHIL GHATANI	BSW	475	365	76.84
26	PRABACHAN THAPA	BSW	475	335	70.53
27	PRIYAL LAMA	BSW	475	316	66.53
28	SHREYA RAI	BSW	475	377	79.37
29	SUDHANSU THAPA	BSW	475	370	77.89
30	TITHI BANERJEE	BSW	475	395	83.16
31	AAKRITI CHETTRI	B.VOC	300	229	76.33
32	ASHWIN RAJ TAMANG	B.VOC	300	222	74
33	CHANDAN SARKAR	B.VOC	300	204	68
34	DIKCHELA TAMANG	B.VOC	300	230	76.67
35	KELSANG SHERPA	B.VOC	300	221	73.67
36	NAGENDRA GURUNG	B.VOC	300	206	68.67
37	PRANISHA THAMI	B.VOC	300	231	77
38	PRIYANKA DARJEE	B.VOC	300	214	71.33
39	REWANT THAPA	B.VOC	300	198	66
40	RONIT BARAILY	B.VOC	300	217	72.33
41	SEWANG LAMA	B.VOC	300	218	72.67
42	SUFI KHATI	B.VOC	300	227	75.67
43	ABHISHEK TAMANG	ENGLISH	375	244	65.07
44	ANIRUDH SHARMA	ENGLISH	375	268	71.47
45	ANSHIK BIJETA EKKA	ENGLISH	375	264	70.4
46	AYUSH GURUNG	ENGLISH	375	259	69.07
47	BHUPENDRA PRADHAN	ENGLISH	375	249	66.4
48	DEEP RAI	ENGLISH	375	19	5.07
49	DIKCHANT RAI	ENGLISH	375	263	70.13

50	DISHANT SINGH	ENGLISH	375	265	70.67
51	DIWAKAR KHAWAS	ENGLISH	375	227	60.53
52	ISNIKA THAPA	ENGLISH	375	282	75.2
53	LAGHIMA ROY	ENGLISH	375	237	63.2
54	NANDITA BHOWMIK	ENGLISH	375	264	70.4
55	NEHA RAI	ENGLISH	375	260	69.33
56	NIMA DIKCHEN SHERPA	ENGLISH	375	254	67.73
57	NIMA TSHERING GURUNG	ENGLISH	375	239	63.73
58	PRABHA TAMANG	ENGLISH	375	260	69.33
59	PRAGATI THAPA	ENGLISH	375	259	69.07
60	PRASANTI PRADHAN	ENGLISH	375	245	65.33
61	PRATIK GAHATRAJ	ENGLISH	375	223	59.47
62	PRATIKCHA TAMANG	ENGLISH	375	265	70.67
63	PRIYASHA TAMANG	ENGLISH	375	264	70.4
64	RAKSHA GURUNG	ENGLISH	375	262	69.87
65	RIYA LOHAR	ENGLISH	375	254	67.73
66	SALONEE RAI	ENGLISH	375	241	64.27
67	SALONI RAI	ENGLISH	375	264	70.4
68	SHASHANK CHETTRI	ENGLISH	375	249	66.4
69	SHAUMYA RAI	ENGLISH	375	234	62.4
70	SHIVANJALI GURUNG	ENGLISH	375	253	67.47
71	SIDDHANT B.K.	ENGLISH	375	240	64
72	SONU RAI	ENGLISH	375	252	67.2
73	SUBRATA KUMAR DAS	ENGLISH	375	232	61.87
74	SUMNIMA RAI	ENGLISH	375	264	70.4
75	TRISHIT SUBBA	ENGLISH	375	250	66.67
76	SUBHANGINI SINGH	ENGLISH	375	255	68
77	SUBHAM THAPA	ENGLISH	375	229	61.07
78	PRIYANA PRADHAN	ENGLISH	375	253	67.47

79	BIKRANT THAPA	HISTORY	375	249	66
80	BRIKCHAM RAI	HISTORY	375	254	67.73
81	KASUM BHUTIA	HISTORY	375	251	66.93
82	NANGDUP TAMANG	HISTORY	375	267	71
83	NIHAL LEPCHA	HISTORY	375	262	69.67
84	PRAJWAL GURUNG	HISTORY	375	266	70.93
85	PRANWDEEP RAI	HISTORY	375	254	67.73
86	ROHAN RAI	HISTORY	375	254	67.73
87	SEETAL TAMANG	HISTORY	375	264	70.4
88	SRIJA BHADURI	HISTORY	375	255	68
89	BHAICHUNG SHERPA	HISTORY	375	268	71.47
90	ANISH CHETTRI	MASS COM	375	262	69.87
91	AMISHA RAI	MASS COM	375	269	71.73
92	ARYAN RAYA	MASS COM	375	277	73.87
93	AYUSH THAPA	MASS COM	375	245	65.33
94	JERAM RAI	MASS COM	375	264	70.4
95	JYOTIKA SIKDAR	MASS COM	375	281	74.93
96	MARSANG LAMA	MASS COM	375	276	73.6
97	PRAFUL GURUNG	MASS COM	375	238	63.47
98	RIHA RAI	MASS COM	375	289	77.07
99	SHIDDHI SINGH	MASS COM	375	287	76.53
100	SIDHANT FILEX TAMANG	MASS COM	375	265	70.67
101	SREOSI SAHA	MASS COM	375	244	65.07
102	SHRISTI CHETTRI	MASS COM	375	272	72.53
103	ABHINANDAN TAMANG	POL. SCIENCE	375	257	68.53
104	AKASH SUBBA	POL. SCIENCE	375	252	67.2
105	ANKIT CHETTRI	POL. SCIENCE	375	276	73.6
106	APEKSHA GURUNG	POL. SCIENCE	375	280	74.67
107	ASHISH GURUNG	POL. SCIENCE	375	266	70.93
108	AVASHESH SHARMA	POL. SCIENCE	375	271	72.27

109	BIJAYA TAMANG	POL. SCIENCE	375	274	73.07
110	BISHAL TAMANG	POL. SCIENCE	375	275	73.33
111	DEEPROJE TAMANG	POL. SCIENCE	375	243	64.8
112	DIYA TAMANG	POL. SCIENCE	375	272	72.53
113	ERIC GOMES	POL. SCIENCE	375	240	64
114	HRITIKA TAMANG	POL. SCIENCE	375	267	71.2
115	ICHHA THAPA	POL. SCIENCE	375	279	74.4
116	LAXCHANA PRADHAN	POL. SCIENCE	375	260	69.33
117	NAVIDITA GURUNG	POL. SCIENCE	375	269	71.73
118	NAYAN RAI	POL. SCIENCE	375	198	52.8
119	NIKITA PRASAD	POL. SCIENCE	375	270	72
120	NIKITA SHERPA	POL. SCIENCE	375	274	73.07
121	NINCHEN TAMANG	POL. SCIENCE	375	264	70.4
122	PEMBA TAMANG	POL. SCIENCE	375	268	71.47
123	PRADITYA LAMA	POL. SCIENCE	375	267	71.2
124	PUNAM MARDY	POL. SCIENCE	375	276	73.6
125	SALON RAI	POL. SCIENCE	375	235	62.67
126	SAMDEN TSHERING TAMANG	POL. SCIENCE	375	240	64
127	SANJOK RASAILY	POL. SCIENCE	375	247	65.87
128	SANSKRITI CHOWHAN	POL. SCIENCE	375	284	75.73
129	SHIVANKAR SUBBA	POL. SCIENCE	375	265	70.67
130	SHRISTI SUBBA	POL. SCIENCE	375	287	76.53
131	SREYAJAL TAMANG	POL. SCIENCE	375	281	74.93
132	XAVIER RAI	POL. SCIENCE	375	277	73.87
133	YANG DOMA TAMANG	POL. SCIENCE	375	264	70.4
134	YANGCHAYGEE DONG	POL. SCIENCE	375	226	60.27
135	YASHNA DARJEE	POL. SCIENCE	375	269	71.73
136	YOGESH HANG SUBBA	POL. SCIENCE	375	252	67.2
137	AAYUSH RAJ SUBBA	SOCIOLOGY	375	270	72



138	ABHAY JOSHI	SOCIOLOGY	375	276	73.6
139	ADITI DURAL	SOCIOLOGY	375	242	64.53
140	ANMOL MOKTAN	SOCIOLOGY	375	232	61.87
141	ANUPRIYA TIRKEY	SOCIOLOGY	375	247	65.87
142	ARIHA CHAKRABORTY	SOCIOLOGY	375	277	73.87
143	ASHIM SUBANI YONZON	SOCIOLOGY	375	251	66.93
144	ASHWINI RAI	SOCIOLOGY	375	269	71.73
145	FALGUNI MARDI	SOCIOLOGY	375	282	75.2
146	LACHEN TAMANG	SOCIOLOGY	375	258	68.8
147	LUCKY DOMA LAMA	SOCIOLOGY	375	252	67.2
148	MUSKAN BALMIKI	SOCIOLOGY	375	239	63.73
149	NURI NISHITA SOREN	SOCIOLOGY	375	275	73.33
150	PRAYASH GURUNG	SOCIOLOGY	375	247	65.87
151	PUSPANJALI PRADHAN	SOCIOLOGY	375	233	62.13
152	RITNITA PRADHAN	SOCIOLOGY	375	253	67.47
153	SALONI RAI	SOCIOLOGY	375	238	63.47
154	SHREYA TAMANG	SOCIOLOGY	375	269	71.73
155	SIMRAN GURUNG	SOCIOLOGY	375	274	73.07
156	SNEHA KHAWAS	SOCIOLOGY	375	213	56.8
157	SUMIRAN RAI	SOCIOLOGY	375	250	66.67
158	VIBHOOTHI PRADHAN	SOCIOLOGY	375	252	67.2
159	ASHEESH DAS	SOCIOLOGY	375	261	69.6

**The following table shows the detailed report of all the students of 6<sup>th</sup> semester:**

<b>SL. No.</b>	<b>Name of the students</b>	<b>Course/ Department</b>	<b>Total Marks</b>	<b>Total Marks Obtained</b>	<b>%</b>
1	GABRIEL HEMBROM	BA PROGRAM	300	204	68

2	DAWA Y. SHERPA	BA PROGRAM	300	184	61
3	NAVNEET RAI	BA PROGRAM	300	193	64
4	SHREYA RAI	BA PROGRAM	300	201	67
5	SUDARSAN RAI	BA PROGRAM	300	195	65
6	IGNESHEUS MANKHIN	BA PROGRAM	300	205	68
7	REEDAM RAI	BA PROGRAM	300	194	65
8	BAPI SOREN	BCA	300	233	78
9	CHADEN SHERPA	BCA	300	221	74
10	CHODEN T.MOKTAN	BCA	300	270	90
11	NEZAIN LEPCHA	BCA	300	262	87
12	REZINA RAI	BCA	300	264	88
13	YUGANT RAI	BCA	300	256	85
14	ADITI SUNDAS	BCA	300	269	90
15	ANJALI TAMANG	BCA	300	278	93
16	ALISHA LEPCHA	B.COM	300	220	73
17	JOHN IGNATIUS MARDI	B.COM	300	191	64
18	MELISSA CHETTRI	B.COM	300	206	69
19	NIKISHA CHETTRI	B.COM	300	202	67
20	RINCHEN L.TAMANG	B.COM	300	192	64
21	ROHAN PRADHAN	B.COM	300	206	69
22	SALONI PRADHAN	B.COM	300	216	72
23	SHARMIN KHATUN	B.COM	300	201	67
24	PRAJWAL D. BURH	B.COM	300	195	65
25	BISHAL K. SHARMA	B.VOC	300	219	73
26	FARMAN KHAN	B.VOC	300	219	73
27	GYANI HANG SUBBA	B.VOC	300	209	70
28	KIRAN RAI	B.VOC	300	225	75
29	KUNZU TAMANG	B.VOC	300	230	77
30	MINGMA W. SHERPA	B.VOC	300	210	70
31	NAFEEZ AHMED	B.VOC	300	214	71

32	PARIKSHIT THAPA	B.VOC	300	197	66
33	RAJAT GUPTA	B.VOC	300	212	71
34	RIKESH THAPA	B.VOC	300	212	71
35	SIDDHARTH SUBBA	B.VOC	300	217	72
36	TENZING WANGPO	B.VOC	300	216	72
37	WANGING LEPCHA	B.VOC	300	228	76
38	AMISHA RAI	B.VOC	300	224	74.67
39	ABHISAR SINCTUARY	EDUCATION	300	224	74.67
40	ANUSKA TAMANG	EDUCATION	300	240	80
41	BINITA CHETTRI	EDUCATION	300	243	81
42	ADEEP RANJAN TIRKEY	ENGLISH	300	208	69.33
43	AKRITI THAPA	ENGLISH	300	189	63
44	ANKIT RAI	ENGLISH	300	172	57.33
45	ASMITA GAZMER	ENGLISH	300	212	70.67
46	DAWA SHERPA	ENGLISH	300	212	70.67
47	DEEPTI RAI	ENGLISH	300	208	69.33
48	DIPASHNA SHARMA	ENGLISH	300	211	70.33
49	DOLMA SHERPA	ENGLISH	300	207	69
50	KARMA GURUNG	ENGLISH	300	207	69
51	KIRTI CHHETRI	ENGLISH	300	211	70.33
52	LAKPA DOMA SHERPA	ENGLISH	300	218	72.67
53	MANOJ MARANDI	ENGLISH	300	214	71.33
54	MERCY CHETTRI	ENGLISH	300	225	75
55	MIGMAR DORJEE BHUTIA	ENGLISH	300	171	57
56	NEHA CHETTRI	ENGLISH	300	205	68.33
57	PEMA RINCHEN LEPCHA	ENGLISH	300	186	62
58	PHUBU LAMA	ENGLISH	300	219	73
59	PRASHANT THAPA	ENGLISH	300	169	56.33
60	PREETI KHAWAS	ENGLISH	300	195	65
61	PRIYASHA TAMANG	ENGLISH	300	199	66.33
62	RINCHEN TAMANG	ENGLISH	300	209	69.67

63	RUDRA PRATAP DAS	ENGLISH	300	162	54
64	SAKSHI SUBBA	ENGLISH	300	217	72.33
65	SANGDEN TAMANG	ENGLISH	300	213	71
66	SANJU RAI	ENGLISH	300	222	74
67	SHRISTY GAZMER	ENGLISH	300	231	77
68	SIJAL RAI	ENGLISH	300	208	69.33
69	SWEKSHA LAMA	ENGLISH	300	224	74.67
70	TENZEEN CHODEN BHUTIA	ENGLISH	300	221	73.67
71	TENZING YEEGA BHUTIA	ENGLISH	300	221	73.67
72	TSERING LOBSANG	ENGLISH	300	207	69
73	UGEN SHERPA	ENGLISH	300	208	69.33
74	YACHANA GURUNG	ENGLISH	300	220	73.33
75	SHANTO HASDAK	ENGLISH	300	218	72.67
76	PRATIKCHA TAMANG	HISTORY	300	198	66
77	RIPJONG LEPCHA	HISTORY	300	194	64.67
78	SIDDHARTH TAMANG	HISTORY	300	199	66.33
79	SIMON D. DUKPA	HISTORY	300	197	65.67
80	ALEX MUKHIA	MASS COM	300	183	61
81	AMIT XAXA	MASS COM	300	182	60.67
82	GAURAB SUBBA	MASS COM	300	232	77.33
83	MATIN RAI	MASS COM	300	197	65.67
84	PHU TENZI TAMANG	MASS COM	300	214	71.33
85	PRATIKSHA CHHETRI	MASS COM	300	228	76
86	PURAVI GURUNG	MASS COM	300	199	66.33
87	RAKCHANA KARKIDOLI	MASS COM	300	210	70
88	RIWAJ DIYALI	MASS COM	300	240	80
89	SANJOK TAMANG	MASS COM	300	207	69
90	ANISHA GURUNG	POL. SCIENCE	300	211	70.33
91	ANKITA TAMANG	POL. SCIENCE	300	196	65.33
92	ARCHANA GHATANEY	POL. SCIENCE	300	199	66.33
93	ARCHANA LAMA	POL. SCIENCE	300	203	67.67

94	BARSHA CHETTRI	POL. SCIENCE	300	188	62.67
95	BIDHAN RAI	POL. SCIENCE	300	193	64.33
96	DIBYANSHU SARKI	POL. SCIENCE	300	203	67.67
97	DIKSHA KUMARI	POL. SCIENCE	300	197	65.67
98	GAYATRI SINHA	POL. SCIENCE	300	198	66
99	KOOMAL TIRKEY	POL. SCIENCE	300	202	67.33
100	LAMIN BOMZON	POL. SCIENCE	300	202	67.33
101	NIKEL GURUNG	POL. SCIENCE	300	197	65.67
102	NITYAM PRADHAN	POL. SCIENCE	300	192	64
103	PARAMDEEP BHUJEL	POL. SCIENCE	300	187	62.33
104	PHULAMU BHUTIA	POL. SCIENCE	300	209	69.67
105	PRIYA K. SAHA	POL. SCIENCE	300	214	71.33
106	SAILJA TAMANG	POL. SCIENCE	300	232	77.33
107	SANGAY D.SHERPA	POL. SCIENCE	300	222	74
108	SANSKAR DHAR	POL. SCIENCE	300	203	67.67
109	SHIWANI ROUTH	POL. SCIENCE	300	203	67.67
110	SUPRINA SUNDAS	POL. SCIENCE	300	225	75
111	SUSHANT GAZMER	POL. SCIENCE	300	202	67.33
112	SWETA TAMANG	POL. SCIENCE	300	198	66
113	SYLVIA NICHOLAS SINGH	POL. SCIENCE	300	236	78.67
114	ANKHIT MANGRATI	POL. SCIENCE	300	177	59
115	AMAN GURUNG	POL. SCIENCE	300	213	71
116	SNEH GURUNG	POL. SCIENCE	300	205	68.33
117	DINCHEN SHERPA	POL. SCIENCE	300	218	72.67
118	ABILASH SHARMA	SOCIOLOGY	300	206	68.67
119	ANIDHYA THAPA	SOCIOLOGY	300	216	72
120	ANISHA PRADHAN	SOCIOLOGY	300	219	73
121	CHOGYEL SHERPA	SOCIOLOGY	300	201	67
122	DEEPSHIKA TAMANG	SOCIOLOGY	300	206	68.67
123	GRACY RAI	SOCIOLOGY	300	205	68.33
124	NEHA TAMANG	SOCIOLOGY	300	214	71.33

125	NORGIMA T. BOMZON	SOCIOLOGY	300	218	72.67
126	PRAVAKER PRADHAN	SOCIOLOGY	300	214	71.33
127	SAURAV RAI	SOCIOLOGY	300	210	70
128	SUDHANSHU GURUNG	SOCIOLOGY	300	202	67.33
129	SUVAM MANGRATI	SOCIOLOGY	300	218	72.67
130	RITIKA TAMANG	SOCIOLOGY	300	216	72
131	BIPASHANA RASAILY	SOCIOLOGY	300	239	79.67
132	ALEXCIUS MINJ	SOCIOLOGY	300	202	67.33
133	BIPIN XESS	SOCIOLOGY	300	206	68.67



DEAN  
B.VOC, B.COM, BCA  
SALESIAN COLLEGE SONADA  
SONADA-734209. DT. DARJEELING, W.B.